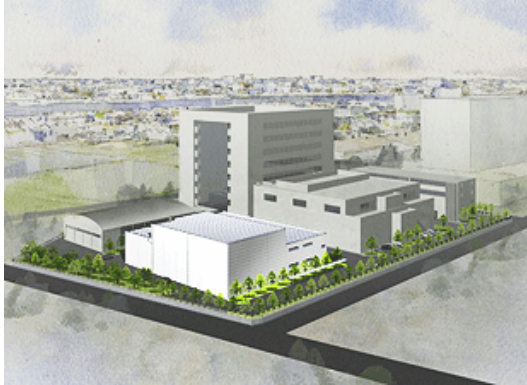




For Immediate Release

TDK Contact in U.S.:

Sara Reynoso
TDK Corporation of America
Tel: 972-409-4519
E-mail: sreynoso@tdktca.com



TDK to Construct and Install New Anechoic Chamber

New state-of-the-art chamber will achieve world's highest electromagnetic wave measurement

TOKYO JAPAN, October 15, 2008—TDK Corporation announced that it will construct a large-scale, high-performance anechoic chamber at its Technical Center in Ichikawa City, Chiba Prefecture. The new chamber, which is scheduled for completion in October 2009, will be able to achieve measurement, evaluation and analysis of electromagnetic waves at the world's highest levels.

The facility will consist of a 10-meter room, a 3-meter room, an antenna room and a shielded room. When combined with existing facilities (a 10-meter room and a 3-meter room), TDK will be able to perform electromagnetic wave measurements of all products that it handles as well as measurements at the world's highest levels tailored to new products developed by customers.

Over the last several years, electronic devices have become increasingly high performance with multi-function technologies. In addition, in the automotive field, there is an increase in the use of electronic controls and devices for various applications. As a result of these technological innovations, electronic circuits have become more dense, frequencies have increased and voltages throughout circuits have dropped, making circuits more susceptible to adverse impact from extremely weak electromagnetic waves.

2 – New TDK Anechoic Chamber Facility – 2

The fundamental areas of electromagnetic wave countermeasures are electromagnetic interference (EMI) countermeasures, which protect other circuits from the electromagnetic waves emitted by a device, and electromagnetic susceptibility (EMS) countermeasures, which protect against effects from external electromagnetic waves. Together, these two types of countermeasures are referred to as electromagnetic compatibility (EMC) countermeasures. It is now the norm to consider EMC countermeasures from the product design and development stages. Global restrictions on permissible electromagnetic waves are becoming increasingly strict from the perspective of preventing malfunctions and ensuring safety, and as a result, EMC countermeasures are more important than ever.

To respond to this demand, TDK will construct a state-of-the-art, cutting-edge anechoic chamber at the Technical Center to measure and evaluate electromagnetic waves during new product development and to propose EMC countermeasure technologies and countermeasure products as well as reinforce the EMC Solutions business by analyzing customer products.

In addition to the central facility in Chiba Prefecture, TDK has anechoic chambers at six other EMC centers worldwide to meet the needs of customers: at the Akita Plant in Japan; Austin, Texas, United States; Seoul, Korea; Suzhou and Huanan, China; and Negeri Sembilan, Malaysia.

TDK also has an extensive lineup of ferrite products. Ferrite is a material that absorbs electromagnetic waves. TDK has used this strength to construct anechoic chambers since 1969, and has installed 1,000 chambers around the globe, putting it in the world-leading position.

Features of the New Anechoic Chamber

1. Characteristics as an EMC anechoic chamber (site attenuation* characteristics: ± 1.5 dB or less; 30 MHz - 1 GHz) are at the world's highest levels, making possible highly precise measurements and assessments.

*Site attenuation refers to the electromagnetic wave attenuation between the transmission and reception antennas being measured using approved methods for the measurement site. The smaller the difference between the measured site attenuation value and the ideal site attenuation (ideal value), the higher the quality of the anechoic chamber.

3 – New TDK Anechoic Chamber Facility – 3

2. Use of TDK original ferrite electromagnetic wave absorbent tiles to achieve cutting-edge absorbent performance.
3. Wiring for test devices will be placed under the floor to create an efficient and fast work environment.
4. A turntable will allow measurement of massive items such as automobiles.

Facility Overview

1. Site: TDK Technical Center (2-15-7 Higashi-Owada, Ichikawa City, Chiba Prefecture)
2. Building area: 1,802 m²
3. Floor area: 2,736 m²
4. Construction period: October 2008 - October 2009
5. Facilities: As indicated below.

Chamber Name	Main Measurement Subject Devices
10m anechoic chamber	Intelligent consumer electronics, information devices, and automobiles.
3m anechoic chamber	Automotive electronics, etc.
Antenna measurement anechoic chamber	Various types of antennas
Shielded room (four rooms total)	Various electronic devices, nearby magnetic field measurement

###

About TDK:

TDK Corporation (NYSE: TDK), a leading global electronics company based in Japan, employs over 51,000 people worldwide. The company was established in 1935 to commercialize "ferrite," a key material in electronics and magnetics. TDK's current product line includes ferrite materials, electronic components, factory automation solutions, anechoic chambers & test systems, magnetic heads for hard disk drives (HDD) and power supplies. Net sales in FY08 were US\$8.7 billion. For more information on TDK products visit our website at www.TDK.com. For more information on TDK "Total EMC Solutions" email emcsolutions@tdktca.com.